

Remote Access – Chrome



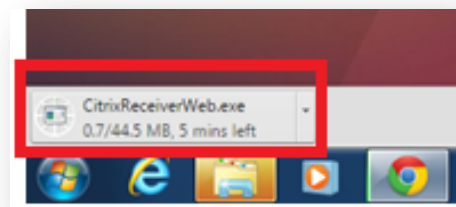
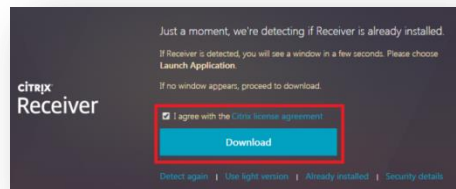
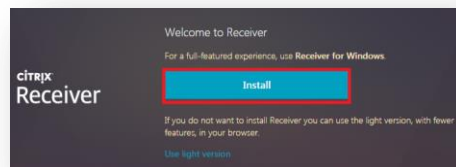
1 Installing Citrix Receiver Using Google Chrome

NOTE: The guidance below is for Google Chrome. If you are using another web browser (such as Mozilla Firefox or Internet Explorer) then please refer to the relevant guide on the [Remote Access Help](#) page

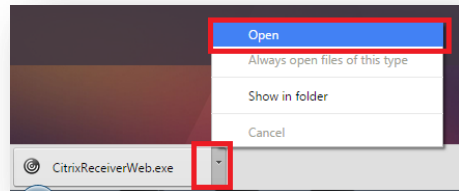
Navigate to the Ince & Co Remote Access page for your Region (see regional addresses below) using Google Chrome as the browser

EUROPE	<ul style="list-style-type: none"> Europe – https://euremote.incelaw.com Europe VPN Access – https://euremotevpn.incelaw.com
MIDDLE EAST	<ul style="list-style-type: none"> Middle East – https://aeremote.incelaw.com Middle East VPN Access – https://aeremotevpn.incelaw.com
ASIA	<ul style="list-style-type: none"> Asia – https://apremote.incelaw.com Asia VPN Access – https://apremotevpn.incelaw.com

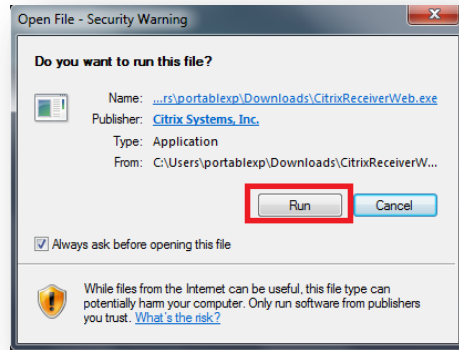
- Once you have logged on by entering the correct credentials, the following window will open when logging on to Remote Access for the first time using Google Chrome as your web browser
- Select **“Install”**
- Mark the **“Citrix license agreement”** tick box and select **“Download”**
- At the bottom left hand corner of the screen – *CitrixReceiverWeb.exe* will proceed to download



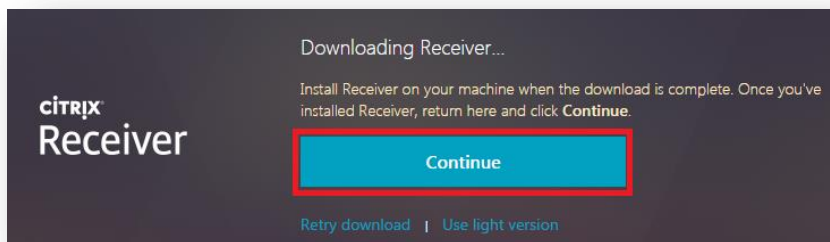
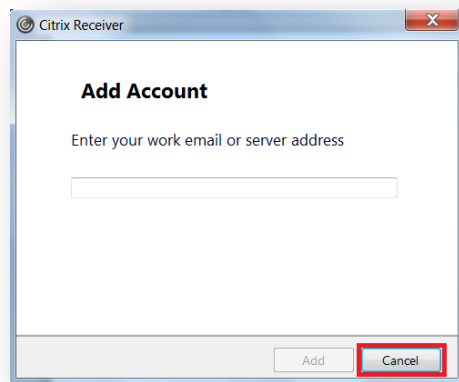
- Once *CitrixReceiverWeb.exe* download is complete, click on the drop down button and select **“Open”**



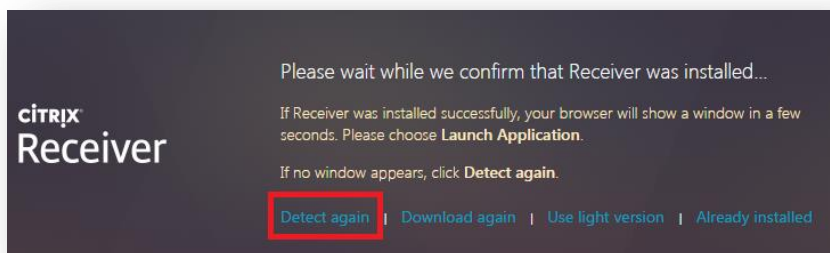
- Select **“Run”**
- A number of windows will appear to install Citrix Receiver
- Follow the prompts until you see the following window



- On *Add Account*, select **“Cancel”**, as highlighted in red here
- Citrix Receiver** has now been installed on your PC and returns to the screen below
- Click onto **“Continue”**



- If prompted select **“Detect again”** to be returned to the *Citrix StoreFront*



- Once back at the *Citrix StoreFront*, select **Desktops** and click onto **EU Desktops XA6** to launch the Remote Desktop in **Desktop Viewer mode**